



A Textron Company

ALERT SERVICE BULLETIN

429-25-64

PSL # 2201

12 February 2025

Revision A, 24 February 2025

MODEL AFFECTED: 429

SUBJECT: NON-CONFORMING FUEL PROBES,
REPLACEMENT OF.

HELICOPTERS AFFECTED: Serial numbers 57001 through 57475, 57477 through 57480, 57483, 57484, 57486 through 57488, 57490 through 57492.

[Serial number 57476, 57481, 57482, 57485, 57489, 57493 and subsequent will have the intent of this bulletin accomplished prior to delivery.]

COMPLIANCE: **PART I:** Within 90 days after release of this bulletin.
PART II: Within 90 days after accomplishment of **PART I** if serial number is listed in Table 1.

DESCRIPTION:

Bell was informed by our supplier that an incorrect part within the build of some fuel probe assemblies was utilized.

Following review, it was determined that in a low fuel level condition, the accuracy of the affected fuel probes could be degraded up to 20%, giving a fuel level over-indication. The low fuel warning system still functions as designed, independent to fuel level indication.

Non-conforming fuel probes that were in our spares stock were contained and removed from our inventory.

Table 1 of this Alert Service Bulletin provides a listing of the remaining affected part numbers and serial numbers that need to be removed from service.

Applicability of this bulletin to any spare part shall be determined prior to its installation on an affected helicopter.

Revision A to this bulletin adds a note to clarify that fuel probes replaced in the field may have a plate assembly identified without a serial number. If no serial number at the plate assembly level is found, this indicates assembly not affected. Subsequently, refer to the fuel probe part number and serial number to determine if affected per Table 1.

APPROVAL:

The engineering design aspects of this bulletin are Transport Canada Civil Aviation (TCCA) approved.

CONTACT INFO:

For any questions regarding this bulletin, please contact:

Bell Product Support Engineering
Tel: 1-450-437-2862 / 1-800-363-8023 / productsupport@bellflight.com

MANPOWER:

Approximately 1 man-hours are required to complete PART I of this bulletin. PART II man-hours required will be dependent on affected parts needing replacement. This estimate is based on hands-on time and may vary with personnel and facilities available.

WARRANTY:

Owners / Operators of Bell Helicopters who comply with the instructions in this bulletin will be eligible to receive Labor and non prorated replacement part as applicable, listed in the MATERIAL section of the bulletin. The www.mybell.com portal allocates specific warranty entitlement for an aircraft by serial number. The Product Service Letter (PSL) number which will be listed below the bulletin number on the introduction page. This is going to be a required field when submitting a claim on the Bulletins Tab for replacement parts, labor, and/or freight. If you receive an ASB or TB that does not have a PSL number, then there is no warranty entitlement for that bulletin.

Labor entitlement: Yes

PART II One or two probes \$2,200.0 USD
PART II Plate Assembly, Fwd, Mid, Mid Aft \$2,200.0 USD
PART II Auxiliary Tank Fuel Probe Assembly \$ 330.0 USD

To receive parts, labor, under warranty:

- Comply with the instructions contained in this Bulletin no later than the applicable date in the “compliance section”.

- If there is a PSL number identified in the bulletin you will be required to enter this PSL number which will validate warranty entitlement for the selected aircraft. Please ensure that you use the Bulletin tab on the warranty section on www.mybell.com portal to file your claim.

You can find out to how to submit a warranty claim on the link below.

<https://bh.my.site.com/helpcenter/s/topic/OTO1T000000EpSbWAK/mybell-user-guidebooks>

MATERIAL:

Required Material:

The following material is required for the accomplishment of this bulletin and may be obtained through your Bell Supply Center.

<u>Part Number</u>	<u>Nomenclature</u>	<u>Qty (Note)</u>
429-066-400-189	Plate Assembly, Fwd	AR (1)(2)
429-066-400-191	Plate Assembly, Mid-Fwd	AR (1)(2)
429-066-400-193	Plate Assembly, Mid-Aft	AR (1)(2)
429-366-405-105	Fuel Probe Assembly, Fwd	AR (1)(2)
429-366-407-103	Fuel Probe Assembly, Aft	AR (1)(2)
429-366-505-103	Auxiliary Tank Fuel Probe Assembly	AR (1)(2)

NOTES:

1. Only required if serial number is identified in Table 1.
2. Packings and gaskets required is dependent on results from **PART I**. Refer to applicable Maintenance Manual data modules to have on hand required materials to accomplish **PART II** as required.

Consumable Material:

The following material is required to accomplish this bulletin, but may not require ordering, depending on the operator's consumable material stock levels. This material may be obtained through your Bell Supply Center.

<u>Part Number</u>	<u>Nomenclature</u>	<u>Qty (Note)</u>	<u>Reference *</u>
Refer to Table 1		AR (1)	AR

* C-XXX numbers refer to the consumables list in the BHT-ALL-SPM, Standard Practices Manual

NOTE 1: Consumables required is dependent on results from **PART I**. Refer to applicable Maintenance Manual data modules to have on hand required consumables to accomplish **PART II** as required.

SPECIAL TOOLS:

None required.

WEIGHT AND BALANCE:

Not affected.

ELECTRICAL LOAD DATA:

Not affected.

REFERENCES:

429-IPB Illustrated Parts Breakdown
429-MM Maintenance Manual

PUBLICATIONS AFFECTED:

None affected.

ACCOMPLISHMENT INSTRUCTIONS:

PART I: Part Number and Serial Number Verification

1. Prepare the helicopter for maintenance.

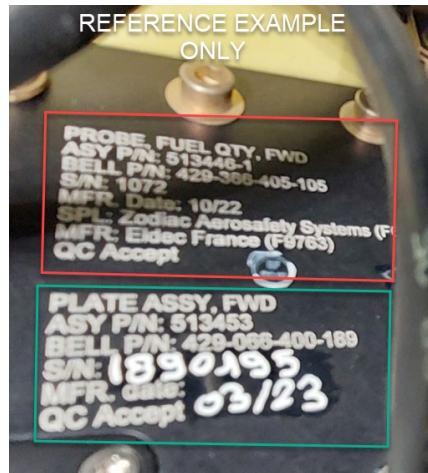
-NOTE-

If reference "SB 72B207-28-001" is found written on the plate assembly, this indicates it was repaired at the supplier and is not affected by this Alert Service Bulletin.



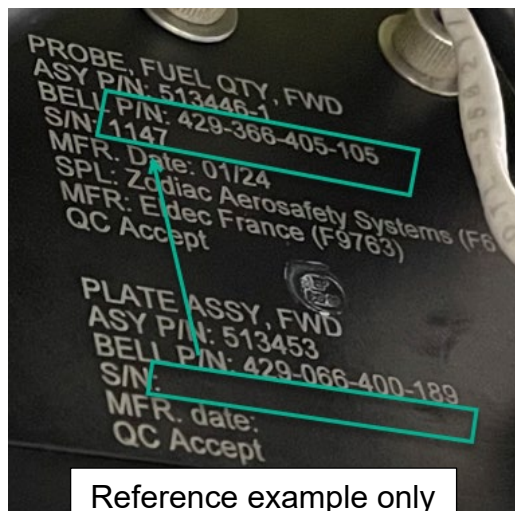
-NOTE-

Table 1 lists the individual probes or plate assemblies sold through spares or installed during production. If a plate assembly referenced is found affected, order a replacement plate assembly. If a probe referenced is found to be affected, order a replacement probe. Access to view probe and plate assembly markings as found on the exterior of fuel system beneath the fuselage.



-NOTE-

Fuel probes replaced in the field may have a plate assembly identified without a serial number. If no serial number at the plate assembly level is found, this indicates assembly not affected. Subsequently, refer to the fuel probe part number and serial number to determine if affected per Table 1.



2. If aircraft records do not contain plate and probe assemblies installed on file to compare with Table 1, as needed, gain access to plate and probe markings by removing forward and aft fuel sump covers ([DMC-429-A-53-00-00-22A-520A-A](#)), ([DMC-429-A-53-00-00-23A-520A-A](#)). If the auxiliary fuel tank is installed, remove applicable interior panels and top panel assembly ([DMC-429-A-28-40-00-04A-520A-A](#)).
3. Visually access the exterior part number and serial number markings on respective plates and probes ([DMC-429-A-28-40-00-01A-042A-A](#), [DMC-429-A-28-40-00-02A-042A-A](#), [DMC-429-A-28-40-00-03A-042A-A](#), [DMC-429-A-28-40-00-04A-042A-A](#)). As applicable if the auxiliary fuel tank is installed ([DMC-429-A-28-40-00-05A-042A-A](#)). Forward fuel quantity probe assembly will have a foam cover needing removal to visually access markings ([DMC-429-A-28-40-00-00A-520A-A](#)).
4. Refer to Table 1, verify on aircraft if any of the listed plate assembly part numbers or fuel probe part numbers are found installed.
5. As required, place a warranty / spares order for replacement parts and required consumables per findings to accomplish **PART II**. Refer to the warranty section.
6. Install forward and aft fuel sump covers ([DMC-429-A-53-00-00-20A-720A-A](#)), ([DMC-429-A-53-00-00-21A-720A-A](#)). As applicable, re-install top panel assembly and interior panels on auxiliary fuel tank ([DMC-429-A-28-40-00-04A-720A-A](#)). Forward fuel quantity probe assembly will have a foam cover needing installation prior to installing the sump cover ([DMC-429-A-28-40-00-00A-720A-A](#)).
7. Make an entry in the helicopter logbook and historical service records indicating compliance with **PART I** of this Alert Service Bulletin.

PART II: Replacement of Non-Conforming Parts Listed per Table 1.

1. Prepare the helicopter for maintenance.
2. As required, remove affected non-conforming parts ([DMC-429-A-28-40-00-00A-520A-A](#), [DMC-429-A-28-40-00-01A-520A-A](#), [DMC-429-A-28-40-00-02A-520A-A](#), [DMC-429-A-28-40-00-03A-520A-A](#)). As applicable if the auxiliary fuel tank probe was affected, ([DMC-429-A-28-40-00-04A-520A-A](#)).
3. As required, install replacement conforming parts ([DMC-429-A-28-40-00-00A-720A-A](#), [DMC-429-A-28-40-00-01A-720A-A](#), [DMC-429-A-28-40-00-02A-720A-A](#), [DMC-429-A-28-40-00-03A-720A-A](#)). As applicable if the auxiliary fuel tank probe was affected, ([DMC-429-A-28-40-00-04A-720A-A](#)).
4. Make an entry in the helicopter logbook and historical service records indicating compliance with **PART II** of this Alert Service Bulletin.

Plate Assembly Forward 429-066-400-189		
1890189	1890192	1890194
1890196	1890202	1890209

Plate Assembly Mid-Fwd 429-066-400-191		
1910192	1910197	1910199
1910200	-----	-----

Plate Assembly Mid-Aft 429-066-400-193		
1930172	1930178	1930179
1930182	1930187	1930190

Fuel Probe Forward 429-366-405-105		
1082	1084	1085
1103	-----	-----

Fuel Probe Aft 429-366-407-103		
* 1019 *	-----	-----

Fuel Probe Aux Tank 429-366-505-103		
* 1019 *	1020	1023
1024	-----	-----

*** Not a typo, same serial number utilized on two different probe part numbers ***

TABLE 1 – Listing by Part Number / Serial Number